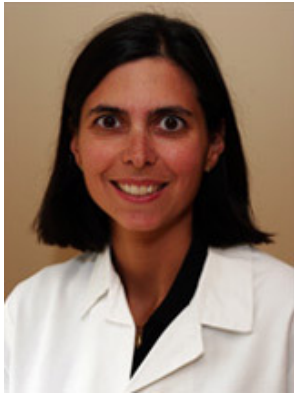




Serena Cardillo, MD *Physician*

**Administrative Title**

Assistant Program Director, Internal Medicine Residency Training Program

Faculty Appointment

Associate Professor of Clinical Medicine

Affiliation

Penn Medicine

Specialty

Diabetes

Board Certification

Endocrinology, Diabetes, & Metabolism, 2006

Areas of Interest

- ▶ cystic fibrosis - diabetes related disorders
- ▶ diabetes management
- ▶ diabetes mellitus - type II
- ▶ pregnancy - diabetes
- ▶ transplant diabetes
- ▶ type I diabetes

Educational Background

Medical School

University of Pennsylvania School of Medicine

Residency

Hospital of the University of Pennsylvania

Fellowship

Hospital of the University of Pennsylvania

Memberships

American Diabetes Association
Endocrine Society

Practice Locations

Penn Rodebaugh Diabetes Center

Perelman Center for Advanced Medicine
West Pavilion, 4th Floor
3400 Civic Center Boulevard
Philadelphia, PA 19104
800-789-PENN (7366)

Dr. Cardillo is a Penn Medicine physician who is employed by or has a contract with the Clinical Practices of the University of Pennsylvania.