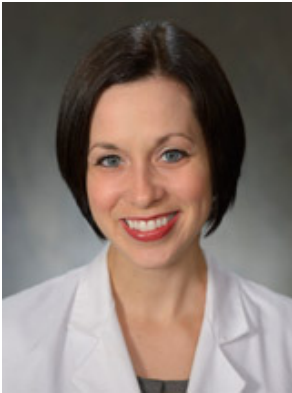




Pamela J. Levin, MD *Physician*

**Faculty Appointment**

Assistant Professor of Clinical Obstetrics and Gynecology

Specialty

Gynecology

Affiliation

Penn Medicine

Areas of Interest

- ▶ bladder prolapse
- ▶ enterocele repair
- ▶ genital prolapse surgery
- ▶ incontinence - female
- ▶ pelvic floor disorders
- ▶ pelvic floor prolapse
- ▶ pelvic floor reconstruction
- ▶ pubo-vaginal sling
- ▶ rectocele repair
- ▶ urinary incontinence surgery
- ▶ urogynecology
- ▶ uterine prolapse
- ▶ vaginal vault prolapse repair

Educational Background

Medical School

Jefferson Medical College

Residency

Pennsylvania Hospital

Fellowship

Duke University Medical Center

Memberships

American Urogynecologic Society
Society for Laparoendoscopic Surgeons

Practice Locations

Penn Urogynecology

Penn Medicine Washington
Square
10th Floor
800 Walnut Street
Philadelphia, PA 19107
800-789-PENN (7366)

A facility of Pennsylvania Hospital

Penn Urogynecology

Chestnut Hill Hospital
Suite 40
8815 Germantown Avenue
Philadelphia, PA 19118

Penn Urogynecology

Penn Medicine Woodbury Heights
1006 Mantua Pike
Woodbury Heights, NJ 08097

Dr. Levin is a Penn Medicine physician who is employed by or has a contract with the Clinical Practices of the University of Pennsylvania.

In New Jersey, providers are affiliated with Penn Medicine through Clinical Health Care Associates of New Jersey.