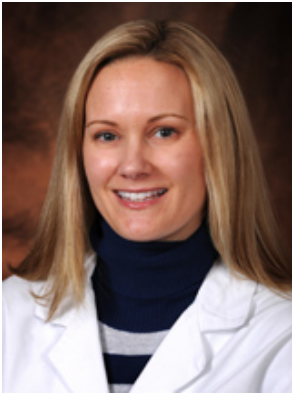




## Victoria Sherry, CRNP *Nurse Practitioner*



**Affiliation**  
Penn Medicine

**Specialty**  
Medical Oncology

**Board Certification**  
Adult Nurse Practitioner, 2002  
Certified Oncology Nurse, 2008

### *Educational Background*

**Medical School**  
*University of Pennsylvania School of Nursing*

### *Practice Locations*

**Lung Cancer**  
Abramson Cancer Center  
Perelman Center for Advanced  
Medicine, West Pavilion, 2nd  
Floor  
3400 Civic Center Boulevard  
Philadelphia, PA 19104

*Victoria Sherry, CRNP is a Penn Medicine provider who is employed by Clinical Practices of the University of Pennsylvania.*