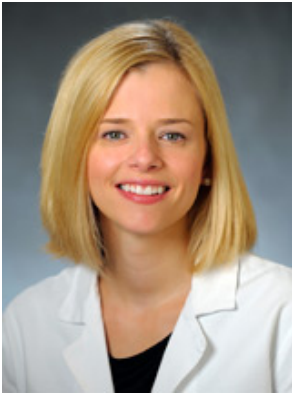




## Brooke Goodspeed, CRNP *Nurse Practitioner*



**Affiliation**  
Penn Medicine

**Specialty**  
Medical Oncology

### *Practice Locations*

**Rena Rowan Breast Center**  
Abramson Cancer Center  
Perelman Center for Advanced  
Medicine, West Pavilion, 3rd  
Floor  
3400 Civic Center Boulevard  
Philadelphia, PA 19104  
800-789-PENN (7366)

*Brooke Goodspeed, CRNP is a Penn Medicine provider who is employed by Clinical Practices of the University of Pennsylvania.*